

VACUUM BREAKER VB21

DESCRIPTION

The VB21 vacuum breakers are simple and reliable devices that automatically relieve or “break” an unwanted vacuum condition, restoring the atmospheric pressure.

This device is particularly suitable for steam heated units of small and medium volume, such as heat exchangers, heating coils, calorifiers, jacketed kettles, steam boilers, etc.

USE: Saturated and superheated steam.

AVAILABLE

MODELS: VB21 – female threaded.
VB21M – male threaded.

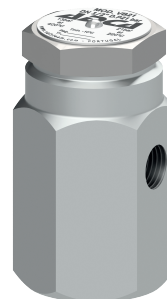
SIZES: 1/2" x 1/8".

CONNECTIONS: System: vertical connection 1/2".
Air inlet: horizontal connection 1/8".
VB21 – female threaded ISO 7 Rp.
VB21M – male threaded ISO 228 G.

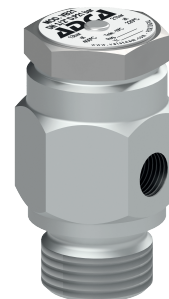
INSTALLATION: Vertical installation angled connection.
See IMI – Installation and maintenance instructions.

LIMITING

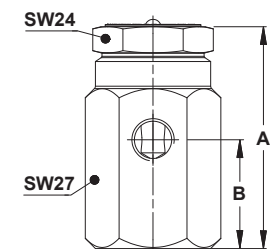
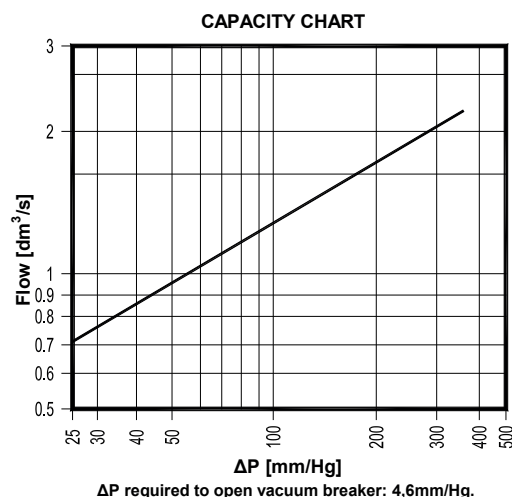
CONDITIONS: 13 bar at 400 °C.
21 bar at 220 °C.



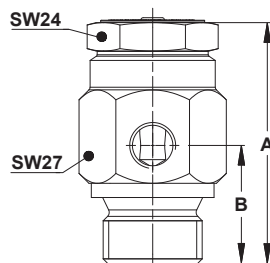
VB21



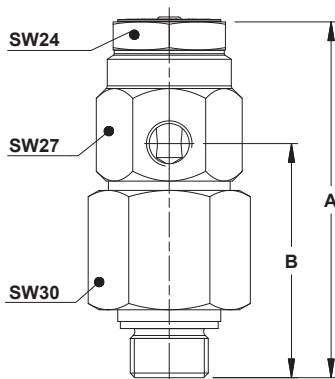
VB21M



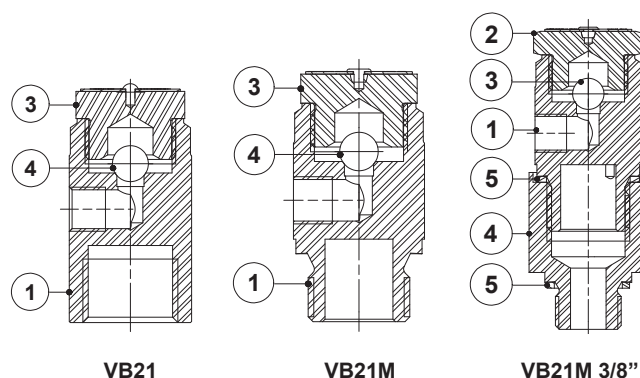
VB21



VB21M



VB21M 3/8"



VB21

VB21M

VB21M 3/8"

| DIMENSIONS (mm) | | | | |
|-----------------|------|----|----|-------------|
| MODEL | SIZE | A | B | WEIGHT (kg) |
| VB21 | 1/2" | 51 | 25 | 0,17 |
| VB21M | 1/2" | 51 | 25 | 0,13 |
| VB21M * | 3/8" | 76 | 50 | 0,29 |

* Special version with adapter fitting 1/2" x 3/8" ISO 228 or NPT.

| MATERIALS | | |
|-----------|-----------------|-------------------|
| POS. N° | DESIGNATION | MATERIAL |
| 1 | Body | AISI 303 / 1.4305 |
| 2 | Cover | AISI 303 / 1.4305 |
| 3 | * Ball valve | Stainless steel |
| 4 | Adapter fitting | AISI 303 / 1.4305 |
| 5 | * Gasket | Copper |

* Available spare parts.